

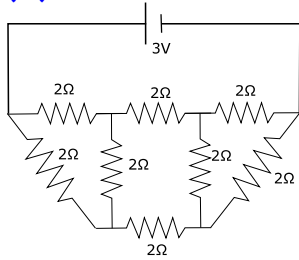
Electronics Examination

Question – 1

Date: 25-09-2017
Time: 11.30AM - 12.30PM
Full Marks: 20

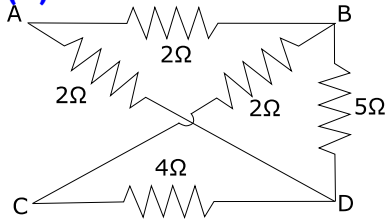
All Questions are compulsory:

(1) Please find the current in the given circuit, 2

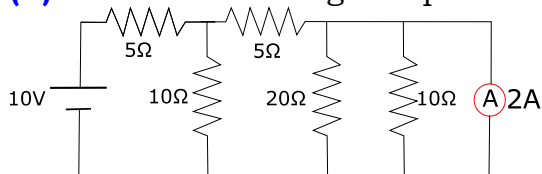


(2) What is LED? Can it be designed with silicon? 2+2

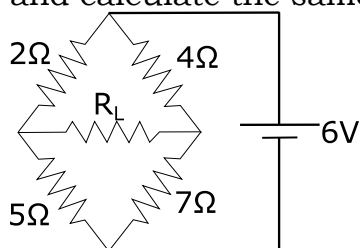
(3) Find the resistance in AC point? 2



(4) What is the voltage drop across 20Ω? 3



(5) What is the value of R_L ? Power ($=V \times I$) in R_L ? Replace the 7Ω with 10Ω and calculate the same. 4+2



(6) What is the value of V_o when $R=1\Omega$? 3

